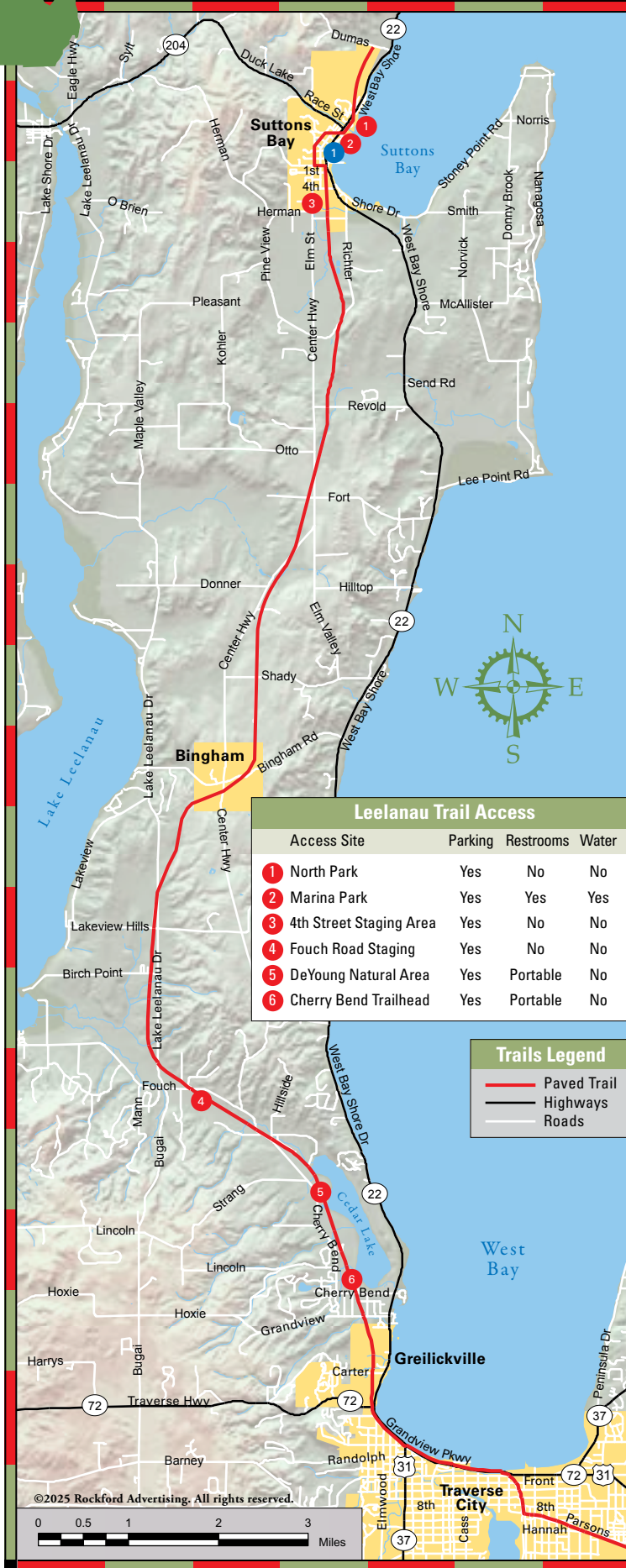




Leelanau Trail



On the trail near DeYoung Natural Area.

### Leelanau Trail

The 17-mile Leelanau Trail is one of Michigan's most scenic rail trails. You will enjoy every mile of the trail as you venture along this peninsula famous for its vineyards, cherry orchards and amazing scenery.

Built on the former Leelanau Scenic Railroad, the route takes you through rolling hills, lush forests, sprawling orchards, peaceful meadows and along streams, lakes and ponds.

The southern half of the trail passes through a valley of woodlands and picturesque farms. Near the village of Bingham, the trail gains elevation as it follows a ridge through cherry orchards with an occasional glimpse of Lake Leelanau or West Traverse Bay off in the distance. For a special treat, ride the trail during the month of May when the cherry blossoms are in full bloom, or in early October when the abundant maple trees are ablaze with brilliant red and gold foliage. During the winter season, the trail is groomed for snowshoeing and cross-country skiing from DeYoung Natural Area to Suttons Bay. The trail is plowed during the winter south of DeYoung Natural Area.

## Bike the Leelanau Trail



*Located on the trail*  
Rentals. Tours. Sales. Service.



1 Location on map.